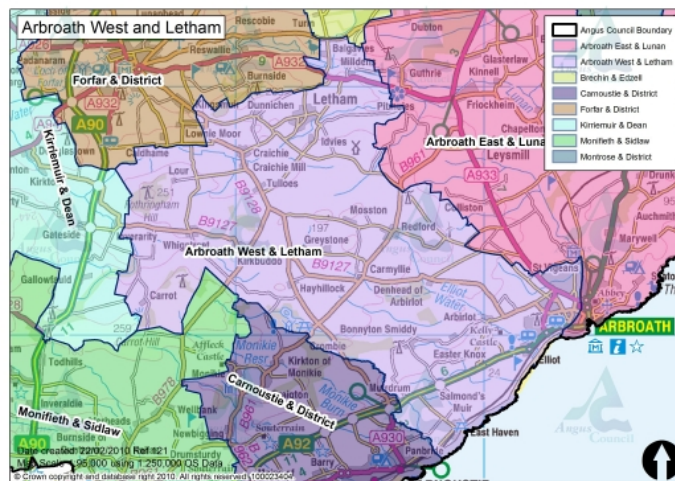
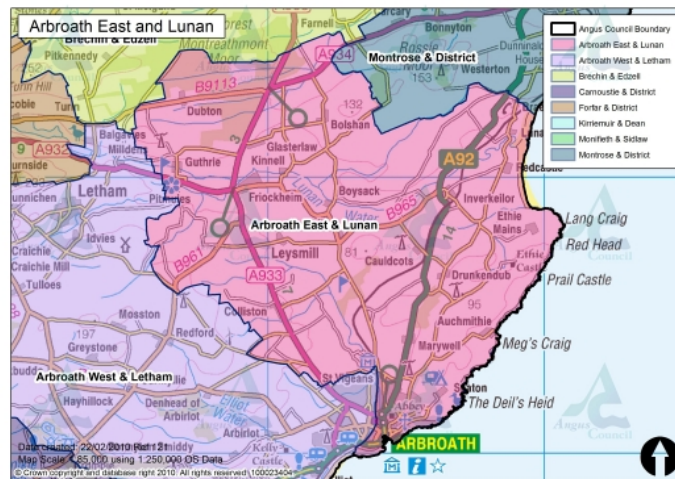


Arbroath East and Lunan and Arbroath West and Letham

Community Profile



People and Place

The Arbroath wards are geographically the fourth and fifth largest wards in Angus, Arbroath West and Letham being slightly larger at 14,892 hectares and Arbroath East and Lunan at 14,095 hectares.¹ With a joint population of just under 30,000 people the wards of Arbroath East and Lunan and Arbroath West and Letham have the fifth and second largest populations in Angus. With 23,680 of the population living in Arbroath town, Arbroath is the most populated town in Angus.²

Industry drives Arbroath's economy, ranging from fishing and food processing to engineering and packaging. This industry is supported by a busy port, substantial investment from the oil and gas sector and the development of Arbroath Enterprise Park. The town is home to key companies such as Abbey Fruit, Keillor Coachbuilders Ltd, Reekie Engineering Ltd, Presentation Products Ltd and R R Spink and Sons Ltd as well as a modern exhibition and conferencing centre, Angus Business Centre. The Business Centre is based at Angus College.³

Tourism is an important business sector for Arbroath. It is the location of the signing of the Declaration of Arbroath and of the Arbroath Smokie that recently gained 'Protected Geographical Interest' status from the European Commission. It is also home to historical attractions such as Arbroath Abbey, the Signal Tower Museum and the Bell Rock Lighthouse. Large annual events such as the successful SeaFest, 'Seafront Spectacular' and the Bell Rock Blues festival all help to attract international interest and inward investment.⁴

Diversification of the economy and regeneration of the town continues to be a priority. While inward investment has introduced new businesses, Arbroath's traditional manufacturing sector has continued to contract. Regeneration of the harbour, Abbey precinct, town centre and other parts of the town have enhanced the quality of the environment and attracted additional investment. Arbroath has strong travel links, benefiting from the completion of the A92 dual carriageway from Dundee in 2005 providing a fast road for freight and passenger traffic. It also has a railway station with rail links to all the major cities and towns in the UK.⁵

Arbroath supports a wide range of retail provision in terms of type, form and location including a covered mall, major food stores and a range of regional and national multiple stores' and independent retailers. The recent establishment of the Westway Retail Park at Dundee Road offers opportunities for larger retail units to be developed within Arbroath. There is also the potential to develop leisure facilities at this gateway location.⁶

Of the population of 29,741 people nearly 60% of those people are of working age with an average of nearly 23% being of pensionable age between the two wards. Men make up 48% of the population with women making up the other 52% however there are over 75% as many women of pensionable age as there are men. 18.5% of the population are under 15.⁷

¹ Angus Council GIS

² www.sns.gov.uk

³ www.angusahead.com

⁴ *ibid*

⁵ *ibid*

⁶ <http://www.angus.gov.uk/localplan/localplansection4arbroath.pdf>

⁷ www.sns.gov.uk

In a recent citizens survey conducted by Angus Council 38% of people surveyed stated that the peaceful, quiet area was what they liked best about living in East Angus (Arbroath East and Lunan and Arbroath West and Letham) ⁸

Community Involvement and Cohesion

The Arbroath and Area Partnership is the local area partnership serving the Arbroath wards. It brings together public, private, business and voluntary sectors to work in partnership to influence and improve the delivery of Public Services, develop sustainable economic growth, support and promote voluntary organisations and to retain and advance local heritage and culture for the well-being of the community. Membership is open to individuals and organisations within the Arbroath, Letham and Lunan areas who are interested in developing projects with other Partnership members that will benefit the local community. The Partnership supports activities that highlight the economy, environment and tourism.

The two wards contain four community councils, the Royal Burgh of Arbroath, Friockheim, Inverarity, and Letham and District who meet to co-ordinate and express the views of their Communities to the local authority and other public bodies in relation to matters for which those authorities are responsible. Community Councils are also involved in other activities for the good of the community.⁹

There are other local community groups that work to promote and develop the town and its outlying areas for the good of the people who live, work and visit there eg Arbroath Ahead Charitable Trust was set up out of the Partnership as a charitable trust in 2007 in order to develop events and activities for the Arbroath area.¹⁰

Angus Association for Voluntary Organisations and the Angus Volunteer Centre are both based in Arbroath and serve residents of Arbroath as well as the wider Angus Community. Angus Association of Voluntary Organisations is the Council for Voluntary Service in Angus. Councils for Voluntary Service (CVS) is the broad name given to the local umbrella organisations supporting the voluntary and community sector in Scotland. They play a crucial role in community development, working at grassroots level and supporting communities to gain a voice in decisions that affect them.¹¹ Volunteer Centre Angus encourages people who want to get involved in volunteering and helps them find the best volunteering opportunity to suit them. They work with volunteering involving organisations to help them create the best experience for volunteers.¹²

Community planning is supported at a local ward area level by a local community planning team based at Gravesend in Arbroath. The team comprising of a Community Planning Officer, A Community Learning and Development Worker, a Community Regeneration Assistant and a Community Participation Assistant work together to help the community influence and deliver their vision for their community.

⁸ Angus Citizens Survey

⁹ www.angus.gov.uk

¹⁰ www.angus.org.uk

¹¹ www.aavo.org.uk

¹² www.volunteerangus.org.uk

45% of the people surveyed through the Angus Citizen's Survey stated that they thought there had been no change in their neighbourhood over the past 5 years and 44% thought it had got worse. Increase in drug problems was the main cause cited closely followed by unfriendly people and neighbours. Of those who thought the area had got better however, (10%) a decrease in drug problems and good disabled facilities was stated.¹³ Low levels of participation in community activities were noted however knowledge of local community planning structures eg consultation events, community councils, residents associations, local area partnerships etc was considerably higher. 67% of those surveyed thought they had no influence over decisions which affected their neighbourhood.¹⁴

Economic Well-being

An average of just over 50% of the population are employed with there being significant variances between Arbroath West and Letham at just over 61%, which is higher than the Angus average and Arbroath East and Lunan at 55% which is the lowest figure out of all the Angus wards and well below the average. Just less than 40% of people work full-time and 12% working part-time and 7% are classed as self-employed. Of those who are not employed 15% are retired, 3.5% are students, an average of 6% are looking after family with greater percentages in Arbroath East and Lunan and 6% are permanently sick or disabled.¹⁵ Nearly 2500 people claim Job Seekers Allowance (JSA) with Arbroath East and Lunan having the largest number of people claiming JSA in the whole of Angus.¹⁶ This area contains 3 of the 5 data zones which are calculated to be amongst the most 15% deprived in Scotland according to the Scottish Indices of Multiple Deprivation.

55% of the people surveyed through the Angus Citizen's Survey stated that they considered lack of job opportunities in Angus to be the main barrier to finding employment.¹⁷ However of those who stated that there was another reason 53% of people thought that workers from other countries were the main barrier.

26.7% of the population in Arbroath East & Lunan and 13.4% of the population in Arbroath West and Letham are categorised as being 'income deprived'. A calculation that includes the numbers of people, both adult and children, who are receiving or are dependent on benefits related to income or tax credits. In this area this equates to nearly 6000 people which again is the largest figure in Angus.¹⁸

The largest sector people work in is the wholesale and retail sector, businesses that sell goods to retailers, wholesalers, or to the general public. The next two largest sectors are manufacturing and health and social work. High levels of work in public administration and defence can also be seen here much more than anywhere else in Angus.¹⁹

Arbroath has 42.4% of Angus' International and Eastern European population, exact figures are very difficult to ascertain due to workers not being registered with the Workers

¹³ Angus Citizens Survey 2009

¹⁴ *ibid*

¹⁵ Table KS09a Economic Activity, <http://www.angus.gov.uk/atoz/mmwards/ks09a.pdf>

¹⁶ www.sns.gov.uk

¹⁷ Angus Citizens Survey 2009

¹⁸ *ibid*

¹⁹ Table KS11a Industry of Employment, <http://www.angus.gov.uk/atoz/mmwards/ks11a.pdf>

Registration Scheme and/or National Insurance and people migrating outwith the area. According to the "Study of Tayside Migrant Labour Population" undertaken by Angus Council migrant worker figures were quoted as being between 2,700 and 4,500 with the best estimate being made at 4,000. Polish is the largest single International and Eastern European community followed by Latvian, Estonian, Lithuanian and Former Soviet Union. Czechs make up the third largest community whilst Bulgarians remain a minority community.²⁰

Between the two wards an average of 50% of people travel to work or study by car, Arbroath West and Letham is higher than the Angus percentage at nearly 55%. The average distance to travel is 16 miles²¹ just over 40% of households in Arbroath East and Lunan own a car where this rises to nearly 50% in Arbroath West and Letham; this is also the highest figure in Angus.²² On average over the whole area in households with a car 72% of people still use public transport to travel to work.²³

In Arbroath the Local Plan maintains the focus on the regeneration of brownfield and opportunity sites within the built up area. The Local Plan promotes development opportunities within Arbroath to take advantage of improved accessibility provided by the upgraded A92. This includes identifying and safeguarding future employment land at Elliot and encouraging new development and investment which reinforce the town as an important retail and service centre and further develop the town's visitor potential.²⁴ The defence establishments at RM Condor are important both in terms of land use and their contribution to the local economy. There is a need to recognise, however, that the role of defence installations may change in response to national defence policy and may result in land or property becoming surplus to requirements.²⁵

Housing

Just under 27% of households in Arbroath East and Lunan are made up of families with dependent children this rises to just under 30% in Arbroath West and Letham, this is the second highest figure in Angus. 8.4% of households in Arbroath East and Lunan are made up of lone parents, this is again the highest figure in Angus with this falling to 5% in Arbroath West and Letham. Both areas have a lower than average figure of pensioners indeed Arbroath East and Lunan has the lowest percentage of pensioner households in the whole of Angus. There are over 10,500 dwellings in the bands A-C with only 4278 dwellings in bands D-H. The majority of dwellings in this area are in band A and are located in Arbroath East and Lunan.²⁶

66% of the people surveyed through the Angus Citizen's Survey in East Angus have lived in the area for over ten years; with 13% having always lived there and 49% of people own their homes.²⁷

²⁰ "Tayside Migrant Labour Population Study", Scottish Economic Research, University of Abertay Dundee, February 2006.

²¹ Table KS15 Travel to work and place of study, <http://www.angus.gov.uk/atoz/mmwards/ks15.pdf>

²² Table KS17 Cars or Vans, <http://www.angus.gov.uk/atoz/mmwards/ks17.pdf>

²³ Table KS15 Travel to work and place of study, <http://www.angus.gov.uk/atoz/mmwards/ks15.pdf>

²⁴ <http://www.angus.gov.uk/localplan/localplansection4arbroath.pdf>

²⁵ <http://www.angus.gov.uk/localplan/localplansection2.pdf>

²⁶ www.sns.gov.uk

²⁷ Angus Citizens Survey

As part of a recent analysis of the local housing system in Angus, the Local Housing Need Assessment (LHNA) assessed the current need for affordable housing in Angus as well as in each of the 4 housing market areas (HMAs) including Arbroath. The need for additional low cost home ownership (LCHO) forms of affordable housing for Arbroath over the period 2003 – 2008 is estimated at 95. A commitment to allocating 20% of the 460 housing allocations in the local plan review will provide 86 affordable housing units.²⁸

The Clifffburn, Strathairlie and Demondale areas of Arbroath have been the subject of a major regeneration initiative. This was a partnership project involving the local community, Angus Council, Communities Scotland, Angus Housing Association, Scottish Enterprise Scotland, Angus College, Tayside Police and Angus Healthcare with the support of monies from the European Regional Development Fund. The regeneration scheme involved the renewal of some existing housing and new residential development, as well as a range of community and environmental projects.²⁹

Arbroath East and Lunan has a relatively high percentage of dwelling houses at risk from both coastal flooding at 1.6% and fluvial flooding at 2%, with areas around Brothock Water, Lunan Water and Raesmill of concern. Angus Council co-ordinates the approach taken to managing coastal erosion, through its Shoreline Management Plan which aims to provide a positive basis for sustainable shoreline management policies over the next 50 years and set a framework for the future management of the Angus coastline.³⁰ The coastline of Arbroath East and Lunan is included in this plan. Arbroath West and Letham is at low risk at 0.6%.³¹

Environment

Arbroath East and Lunan and Arbroath West and Letham has a rich and varied biodiversity that is reflected in the broad range of sites designated for their natural heritage value. Protecting and enhancing the environmental assets and built and historic heritage is central to the sustainable development of the Arbroath wards.

There are four sites of special scientific interest (SSSI) in the Arbroath wards area. Dilty Moss is a raised bog which has been cut-over and disturbed in the past resulting in the development of a wide range of wetland plant communities which are scarce in Angus. Easthaven has a dune grassland with 85 species of native vascular plants, including greater yellow rattle, pyramid orchid, hard rush and frog orchid. Elliot Links, a Sand dune, transition sand dune and invertebrate assemblage and part of the Whiting Ness to Ethie Haven Coastline. This encompasses sea cliffs and rocky shores which supports nesting seabirds, wintering waders and a wide range of coastal plant communities and locally rare invertebrates. This site is geologically important for exposures of Upper Old Red Sandstone and Ethie Lavas.³²

St Vigeans Den is a designated 'breathing space area' developed by volunteers with the planting of native, local provenance species like Scots pine, rowan trees and wildflowers such

²⁸ <http://www.angus.gov.uk/localplan/ALPRReviewAdoptedsmall.pdf>

²⁹ <http://www.angus.gov.uk/localplan/localplansection4arbroath.pdf>

³⁰ <http://www.angus.gov.uk/ac/documents/roads/SMP/A-1.pdf>

³¹ www.sns.gov.uk

³² <http://www.angus.gov.uk/corepathsplan/Strategicenvironmentalassessment/Appendix4.pdf>

as primrose, bluebell, bugle and snowdrop. Interpretation boards to help visitors and increase their enjoyment of the walk around Brothock Water. There are also plans for wheelchair accessible timber picnic tables on the grassy picnic area, a stone cairn, a living willow fence an arbour, and an outdoor classroom area.³³

Crombie Country Park is sited within the Arbroath West and Letham ward. It occupies an area of 102 ha and includes Crombie Loch as well as broadleaf and coniferous woodlands. With over 7km of woodland trails, making it an ideal place to see red squirrels, woodpeckers, roe deer as well as Green and Great-Spotted Woodpeckers. On the loch there are Grebes, Heron and a variety of waterfowl. Crombie's social and natural history is interpreted along the discovery trail.³⁴

The House of Pitmuies garden at Guthrie is well known for its beautiful walled gardens. It has collections of old fashioned roses and lovely herbaceous borders containing massed delphiniums. There is an alpine meadow of wild flowers, a woodland garden and woodland walks. In all around the House of Pitmuies Garden covers 25 acres.³⁵

91% of the people surveyed through the Angus Citizen's Survey stated that they were either very satisfied or fairly satisfied with their natural environment and 83% of the people surveyed stated that they were either very satisfied or fairly satisfied with parks and open spaces.³⁶

Both Nitrogen dioxide concentrations and particulate pollution can harm the human respiratory and cardiovascular systems, and are linked to asthma and mortality. Coal burning, diesel combustion, construction, mining and quarrying are the major sources of particulate emissions.³⁷ In Arbroath East and Lunan nitrogen oxide concentrations are slightly lower than the Angus average however particulate pollution concentrations are considerably higher than the Angus average. In Arbroath West and Letham nitrogen oxide concentrations and particulate pollution concentrations are both considerably higher than the Angus average³⁸

Transport and Access

The coastal area of Angus includes Arbroath and is the most densely populated area in Angus. Bus services here are provided largely on a commercial basis. There are 13 operators providing registered local bus services in the area, with Stagecoach Strathtay, providing approximately 90% of the local bus service network.

Recent improvements at Arbroath train station have included a passenger lift and cycle shelter provision. There are services to and from Dundee and beyond every half an hour during peak times.³⁹

³³ <http://www.breathingplaces.org>

³⁴ www.angusahead.com

³⁵ www.greatbritishgardens.co.uk

³⁶ Angus Citizens Survey 2009

³⁷ <http://www.scotland.gov.uk/Topics/Statistics/Browse/Environment/TrendPM10>

³⁸ www.sns.gov.uk

³⁹ <http://www.tactran.gov.uk/documents/TACTRANRTS-FinalNov2008.pdf>

The A92 coastal tourist route through Angus extends through Carnoustie to the north of Montrose, a distance of some 26 miles (41 km). Within the coastal corridor a range of facilities providing for the needs of tourists and long distance travellers are located adjacent to the A92 or within existing towns and villages all of which are easily accessible from the A92. Existing facilities are located at Ethiebeaton Park (travel lodge, restaurants, fast food and toilets together with planning permission for fuel), whilst a range of other facilities are located within Carnoustie. The Local Plan policy seeks to support facilities within existing communities adjacent to the A92 by directing proposals for new facilities to locations within existing development boundaries in preference to the development of facilities within the open countryside.⁴⁰

90% of the people surveyed through the Angus Citizen's Survey stated that they were either very or fairly satisfied with public transport.⁴¹

ACCESS Angus is the way for Angus citizens to access council services. This is available at ACCESS Offices, ACCESSLine and ACCESS Online. An ACCESS Office provides a council office where the public can speak to a member of staff. Staff can deal with all general enquiries, requests for services, complaints and payments for some council services. There is an ACCESS office in Arbroath. ACCESSLine is a direct telephone line for council services and can deal with all general enquiries, requests for services, complaints and payments for some council services. ACCESS Online is the A-Z of Services function of the Angus Council website which contains lots of service information, and allows users to request services online.⁴²

Of the people surveyed through the Angus Citizen's 67% stated that when they last contacted the Council it was by telephone and 28% by a personal visit to a council office.⁴³

Community Safety

In 2007 a report was commissioned by Angus Community Safety Partnership to ascertain how residents within Angus rated their local area, how safe they felt within their area and whether specific anti-social behaviour and environmental issues were of concern to them. A follow up assessment was completed in 2009 to help confirm findings.

The areas surveyed in Arbroath were split into nine areas of the Arbroath town. The rural areas of Auchmithie, Colliston, Craichie, Friockheim, Inverarity, Inverkeillor and Letham were also surveyed.

In Arbroath on average 45% of people reported that the area they lived in was "very good". This varied across areas from 64% to 35%. This rises to nearly 82% in the rural areas surrounding Arbroath. An average of nearly 60% of people in the town areas and over 83% of residents in the more rural areas stated that they felt very safe in the area when they were out alone during the day. Again this varied across areas from 78% to 43%. These figures fall to

⁴⁰ <http://www.angus.gov.uk/localplan/localplansection27.pdf>

⁴¹ Angus Citizens Survey 2009

⁴² www.angus.gov.uk

⁴³ Angus Citizens Survey 2009

averages of 17% in the town and 45% in rural areas at night. 13% of people in some areas of the town thought that it was too unsafe to walk alone at night.⁴⁴

Issues that concerned people in Arbroath included dog fouling at 30%, while 22% were worried about people drinking or using drugs. 22% of people stated they were very worried about young people hanging around and 21% of people were very worried about rubbish lying around. In rural areas the biggest causes for concern were dog fouling and rubbish lying around.⁴⁵

42% of people surveyed through the Angus Citizen's Survey stated that they had felt fearful about becoming a victim of crime in the past year, 18% had actually been a victim of crime. 82% of the people surveyed stated that they were either very satisfied or fairly satisfied with the police service. 72% of people were very satisfied and 28% were fairly satisfied (100%) with the fire service⁴⁶

Health & Social Well-being

GP practices in Arbroath are at the Abbey Health Centre and the Springfield Medical practice. Other practices in outlying areas are at Friockheim Health Centre. The nearest minor injury unit is at Arbroath Infirmary. Special nurses, who have undergone training in both minor injuries and minor illnesses, staff Minor Injury Units. Some of the units have x-ray facilities during the day and there is a specialist Orthopaedic Support Nurse whom can treat patients in the first instance before referring on to the fracture clinics to be seen by a member of the orthopaedic team. The Out of Hours Service also operates out of the Minor Injury Units.⁴⁷ Ninewells Hospital is 17 miles away with accident and emergency provision.

Both areas of Arbroath have a higher percentage of the population prescribed drugs for anxiety, depression or psychosis than Angus at 9%, hospital admissions for both alcohol and drugs misuse are nearly twice the Angus average in Arbroath East and Lunan.⁴⁸ Tayside Substance Misuse Services (TSMS) is an area-wide service delivering treatment for addictions. This over arching NHS Service is hosted by Angus Community Health Partnership (ACHP). The services operate multi-disciplinary teams within health settings as well as working in partnership with other statutory and voluntary services within and outwith the field of addictions. The majority of services are community based working out of health centres across Angus, offering individual and group-work specialist interventions. A residential unit for alcohol and drug problems is located currently at Sunnyside Royal Hospital. General Hospital liaison services for alcohol problems are located in Ninewells and respond to Angus admissions. Primary Care Liaison services are delivered within general practice, both services focus on early intervention, through screening and delivery of brief interventions.⁴⁹

⁴⁴ Angus Community Safety Partnership, Community Safety Survey 2009 - Arbroath

⁴⁵ ibid

⁴⁶ Angus Citizens Survey 2009

⁴⁷ http://www.nhstayside.scot.nhs.uk/chp/anguschp/services_minorinjury.shtml

⁴⁸ www.sns.gov.uk

⁴⁹ http://www.nhstayside.scot.nhs.uk/chp/anguschp/services_minorinjury.shtml

Both wards have a lower percentage of children breast feeding at the 6-8 week review than the Angus average and Arbroath East and Lunan has a lower percentage of children vaccinated against MMR1 by 5 years of age than Angus figures.⁵⁰ Health Visitors/Public health Nurses are registered nurses with additional specialist qualifications in community health/public health nursing. They work together with other healthcare agencies, local authority professionals and voluntary agencies. At present they are aligned to GP Practices and carry caseloads specific to each GP Practice, however they work cooperatively with individuals, families, groups and whole communities and are skilled in assessing and offering information on a wide range of issues, such as Antenatal Care, Postnatal Care and Child Development.⁵¹

96% of the people surveyed through the Angus Citizen's Survey stated that they were either very or fairly satisfied with their local health services. Everyone surveyed was registered with a GP.⁵²

Only 37% of people surveyed through the Angus Citizen's survey stated that their overall health was good, the lowest figure for Angus with 43% of people stating that they undertook moderate physical activity for a period of 30 minutes a day 5 days a week or more. 23% of people stated that they had eaten five portions of fruit or vegetables the previous day and 34% currently smoke. 53% of people had been feeling optimistic about the future and 74% had felt useful.⁵³

Education and Life Long Learning

There are fourteen primary schools serving the two wards, seven in the town area of Arbroath with seven in outlying areas. There are two secondary schools, Arbroath Academy and Arbroath High School. Angus Further Education College is located in Arbroath and meets the education and training needs of a widespread population. The Landbased team have a facility at St Vigeans Glebe and West Newbigging, located on the outskirts of Arbroath, allowing students to experience the practical aspects of their courses first hand. With gardens, animals on site and an excellent range of equipment including tractors and quad bikes, this facility creates a real working environment. Residents from Arbroath make up 31% of the college population.⁵⁴

In 2007 primary school attendance rate was just under 95% in Arbroath East and Lunan with slightly higher figures in Arbroath West and Letham with secondary school attendance just under 89% in the east and 93% in the west.⁵⁵ Just over 81% of pupils leaving S4 had 5 awards at SCQF level 3 and above in Arbroath East and Lunan with slightly higher figures in Arbroath West and Letham of 93% with 68% of pupils achieving 5 awards at level 4 and above in the East and 83% in the west. Only 32% of S5 pupils achieved one award at level 6 or above in Arbroath East and Lunan with 60% achieving the same in Arbroath West and

⁵⁰ www.sns.gov.uk

⁵¹ http://www.nhstayside.scot.nhs.uk/chp/anguschp/services_minorinjury.shtml

⁵² Angus Citizens Survey 2009

⁵³ Angus Citizens Survey 2009

⁵⁴ www.angus.ac.uk

⁵⁵ www.sns.gov.uk

Letham. Only 11.5% of pupils achieving 3 awards at level 6 or above in the East and 30% in the western ward.⁵⁶

In 2009 just over 17% of school leavers from Arbroath Academy went into higher education. This is the lowest figure in Angus. 50% moved onto further education, which is the highest figure in Angus. 16.3% were registered as unemployed seeking work; again this is the highest figure in Angus. 42% of school leavers from Arbroath High School went into further education, with just under 31% moving onto higher education, 7.7% were registered as unemployed seeking work.⁵⁷

There is an integrated children and young people's services partnership for this area. It provides a forum for local agencies to work together to ensure that local services reflect the needs, interests, concerns and aspirations of children, young people and families. Representatives are drawn from a number of key council services including education and social work, along with partners from NHS Tayside, Tayside Police and the voluntary sector. Through the creation of shared local action plans, partnerships work together for the benefit of children, young people and families in their area.⁵⁸

80% of the people surveyed through the Angus Citizen's Survey stated that they were very satisfied with local schools.⁵⁹

The Community Learning and Development wing is situated at Arbroath Academy is the local community learning and development Service which works with the Community to provide opportunities for adults and young people to learn in a range of informal settings and helps community organisations to be well organised and to achieve their goals. This includes advice and assistance in setting up new groups, training for people on management committees and advice and support in identifying sources of grant aid and making applications. There is also an adult learning shop based at Westport in Arbroath.

The highest qualification held by the majority of people surveyed through the Angus Citizen's Survey in Central and West Angus was an O Grade, Standard Grade, GCSE, CSE, Senior Certificate or equivalent. Only 2% had a first degree.⁶⁰

⁵⁶ www.sns.gov.uk

⁵⁷ <http://www.skillsdevelopmentscotland.co.uk/>

⁵⁸ www.angusahead.com

⁵⁹ Angus Citizens Survey 2009

⁶⁰ Angus Citizens Survey 2009

Culture and Leisure

The library in Hill Terrace provides lending, reference, local history, Internet and information. There is a regular programme of events, exhibitions and activities for all age ranges. There are a wide range of local history publications and some educational material for sale. The library can provide accommodation on a hire basis for clubs and societies.⁶¹

Arbroath has two leisure centres; Arbroath Sports Centre at Keptie Street is a modern facility offering a diverse range of sporting activities for all. The Centre features its own swimming pool. Sporting facilities at this well equipped centre include a six badminton court sports hall, gymnasium, squash courts, outdoor pitches and a hi-tech fitness suite. The Saltire Leisure Centre is also a purpose built facility in Arbroath that can accommodate a wealth of sporting and leisure activities for all abilities and age groups. Facilities include 2 x Games Halls, 2 x Fitness Suites; Crèche Facility, Health Suite and meeting rooms.⁶²

74% of the people surveyed through the Angus Citizen's Survey stated that they were very satisfied with their community centre and library and 67% of the people surveyed stated that they were very satisfied with sports and leisure facilities. These are the highest figures for Angus⁶³

The refurbished Webster Theatre in Arbroath re-opened in 2008. The multi-million pound refurbishment saw the entrance completely opened up, the auditorium and balcony re-seated and the stage and backstage substantially improved. New sound and lighting equipment was also installed. The Assembly Hall has also been refurbished, and the installation of banked seating for 72 people means that this can be used as a studio, film or performance space. The theatre may be hired by organisations and individuals for theatrical productions, events, exhibitions, meetings, sports use and functions such as wedding receptions, dances and dinners. Conference facilities are also available.⁶⁴

Arbroath Abbey was founded in 1178 in honour of the murdered St. Thomas, Archbishop of Canterbury. Arbroath Abbey hosted the most significant event in Scottish history. On 6 April 1320 the Scottish Declaration of Independence was signed by the assembled Scottish nobility in Arbroath Abbey. The Declaration was addressed to the Pope who had given his support to Edward II and excommunicated Robert the Bruce. Arbroath Abbey has one more important date in its history. On Christmas Day 1950 the Stone of Destiny was stolen from Westminster Abbey. On the morning of 11 April 1951 it was deposited on the site of the high altar where it was discovered by the Abbey custodian. Many believe it was not the original stone that was returned or that now sits in Edinburgh Castle.⁶⁵

The 1394 Arbroath harbour was built at the interestingly named Danger Point, and remained in operation until destroyed in a gale in 1706. Its 1734 replacement was expanded in 1842, and again in 1877. Arbroath in its time has been an important trading port with destinations in Scandinavia, and as far afield as North America. At the harbour, the mouth-watering

⁶¹ ibid

⁶² ibid

⁶³ Angus Citizens Survey 2009

⁶⁴ www.angus.gov.uk

⁶⁵ <http://www.angus.gov.uk>

scent of that famous Arbroath delicacy, 'the Smokie', wafts from the surrounding smokehouses. The regenerated harbour in Arbroath features a multi-media visitor information and orientation centre, managed by national tourism agency VisitScotland, a seafood restaurant, coffee shop, public toilets and two shops. The harbour also has a marina with 3 serviced pontoons, new lighting and safety rails and street furniture.⁶⁶

Near the harbour is the Arbroath Signal Tower Museum. This was built in 1813 as the shore station for the Bell Rock lighthouse, and was erected by Robert Stevenson in the years up to 1811, to warn mariners of notorious rocks 12 miles south east of Arbroath. This was the first time anyone had ever built a lighthouse on a rock that was submerged every high tide, and the construction of the 115ft high structure marked the pinnacle of the lighthouse-building achievements of the Stevenson family.⁶⁷

Other important buildings are Arbroath's Water Tower, built in 1885, The Water Tower is a category B listed building⁶⁸ and Hospitalfield House. Originally a plague and leprosy hospice, founded as the Hospital of St. John in the mid-1200s. The present building may contain fragments of the original building (just to the left of the front door) but what we see today dates from the mid-1800s.⁶⁹

The Arbirlot manse Stone stands in the new manse garden, just off the road from Arbirlot to Kelly road. This stone was discovered in the foundations of Arbirlot Church in 1852. It was probably recumbent, and although originally thought to be Pictish, probably dates to about 1100 AD.⁷⁰

There are four golf courses contained in the two Arbroath wards. The Arbroath Course at Elliot, the Old Golf Course and the Glens Course at Letham Grange and Guthrie Castle Golf course. All of Angus' golf courses are marketed by the Carnoustie Country Initiative.⁷¹

⁶⁶ www.angusahead.com

⁶⁷ *ibid*

⁶⁸ www.angus.gov.uk

⁶⁹ *ibid*

⁷⁰ www.angusahead.com

⁷¹ www.carnoustiecountry.com