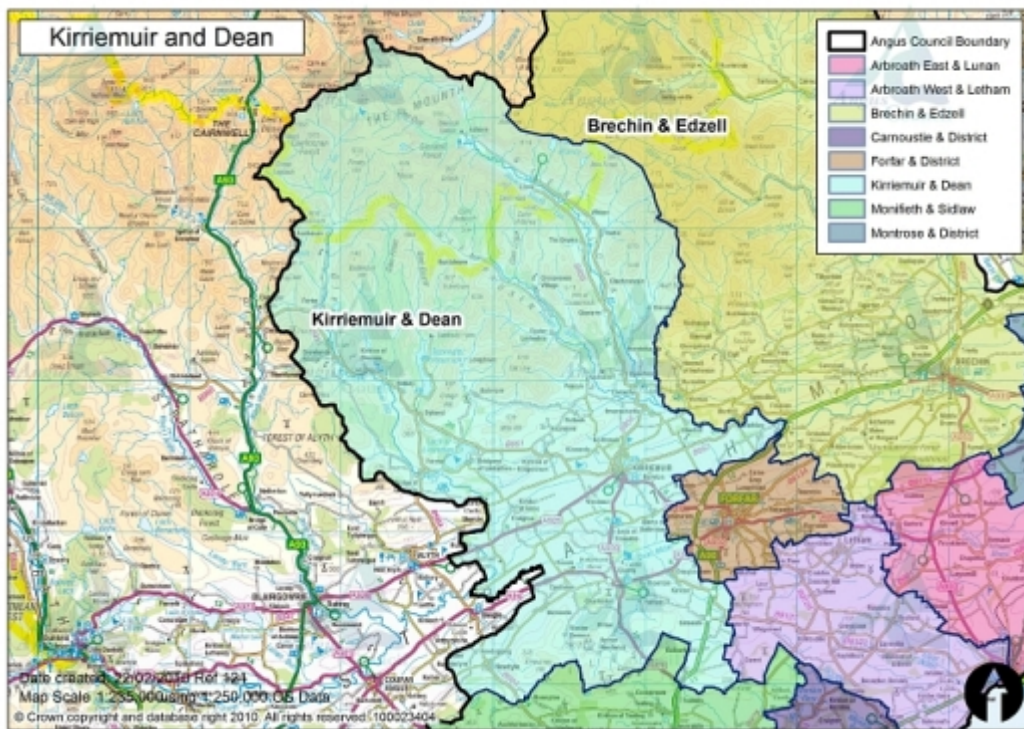


# Kirriemuir and Dean

## Community Profile



## People and Place

The Kirriemuir and Dean ward is the largest ward in Angus at 81,574 hectares and with a total population of only just over 9000, the Kirriemuir and Dean ward is the least populated in Angus. More than half of that population, 5467 people live in Kirriemuir town which is the also the smallest town in Angus. Kirriemuir is a gateway community at the foot of the Angus Glens, providing a range of services and facilities to the wider area. As the fastest growing town in Angus over the last decade, it has increasingly become a residential town with fairly extensive housing development in recent years. Retailers provide for mainly local needs and those of its extensive rural surroundings, as well as the tourism trade.

Kirriemuir is home to the industrial textiles business, J & D Wilkie Ltd, situated at the Gairie Work and established in 1868 by David and James Wilkie, this is a privately owned global textile manufacturing company and one of the leading industrial textiles manufacturers in Europe.

Nicknamed the "Wee Red Town", Kirriemuir has interesting shops, galleries, and cafes around the old heart of the town complemented by excellent small museums, and good quality reasonably priced housing. The town has experienced significant house building in the past, but since 1999 further development has been restricted due to issues at the Waste Water Treatment Plant

Kirriemuir is the birthplace of J M Barrie, author of Peter Pan, and this unique association provides opportunities for growth of the town's tourist industries as the mainstay of the area. It is hoped that the development of a small business park in Kirriemuir will soon be a possibility.

The Airlie Estates are situated in the Angus Glens surrounding Kirriemuir and covers a wide variety of groundscapes from moorland to arable farm land. Its estate office is located at Kirriemuir. The main activities of the estate are organic and conventional farming, forestry, property and agricultural rents, sporting lets and access management.

Kirriemuir and Dean encompasses Glen Isla, Glen Prosen and Glen Clova as well as a myriad of small rural parishes including Glenisla, Kilry and Lintrathen to the north; Airlie, Ruthven and Kingoldrum to the south and Cortachy and Glamis to the East and West.<sup>1</sup> Kirriemuir lies on the edge of the east side of the Cairngorms National Park.

Of the population of 9807 people just over 58% of those people are of working age however just under 24.5% are of pensionable age, a figure that is higher than the Angus average and is the largest percentage of all the Angus wards. Men make up 48% of the population with women making up the other 52% however there are nearly 75% more women of pensionable age than there are men. Just over 17% of the population are under 15.<sup>2</sup>

In a recent citizens survey conducted by Angus Council 41% of people surveyed stated that the peaceful, quiet area was what they liked best about living in Central and West Angus.<sup>3</sup> (Forfar and District and Kirriemuir and Dean)

---

<sup>1</sup> [www.angushead.com](http://www.angushead.com)

<sup>2</sup> [www.sns.gov.uk](http://www.sns.gov.uk)

<sup>3</sup> Angus Citizens Survey

## Community Involvement and Cohesion

A pilot community planning project began in Kirriemuir and Dean in 2007 to bring together local elected members, the community council and the local area partnership to focus on and develop one key thematic priority area. It was agreed that the pilot would focus on the thematic area of economic development, which translated at a local level to 'tourism'. The deliberate involvement of national partners whose own work complemented the group's thematic priority broadened the expertise and experience base of the group and proved invaluable in delivering the group's thematic aims. For example Glamis Castle and the Cairngorms National Park Authority both worked with the pilot group.<sup>4</sup> On completion of the pilot it was agreed to continue with the project group as the local community planning agent for Kirriemuir and Dean. They continue to work to their agreed priority of tourism and are exploring additional priorities for the area.

The ward has five Community Councils in the area, Kirriemuir, Kirriemuir Landward West, Kirriemuir Landward East, Glamis and Newtyle & Eassie who meet to co-ordinate and express the views of their Communities to the local authority and other public bodies in relation to matters for which those authorities are responsible. Community Councils are also involved in other activities for the good of the community.<sup>5</sup>

There are other local community groups that work to promote and develop the town and its outlying areas for the good of the people who live, work and visit there eg the Kirriemuir Heritage Trust which has been established to protect, record, promote and celebrate all aspects of Kirriemuir Heritage by providing the town with a Heritage Trail which marks significant historical sites and sites of interest with plaques as well as developing individual projects like the Celebrations for J M Barrie's 150<sup>th</sup> birthday.<sup>6</sup>

Community planning is supported at a local ward area level by a local community planning team based in the ACCESS office in Bank Street, Kirriemuir. The team comprises of a Community Planning Officer, A Community Learning and Development Worker and a Tenant Participation Officer work together to help the community influence and deliver their vision for their community.

Angus Association for Voluntary Organisations and the Angus Volunteer Centre are both based in Arbroath and serve residents of Arbroath as well as the wider Angus Community. Angus Association of Voluntary Organisations is the Council for Voluntary Service in Angus. Councils for Voluntary Service (CVS) is the broad name given to the local umbrella organisations supporting the voluntary and community sector in Scotland. They play a crucial role in community development, working at grassroots level and supporting communities to

---

<sup>4</sup> [www.angus.gov.uk](http://www.angus.gov.uk)

<sup>5</sup> *ibid*

<sup>6</sup> [www.kirriemuirheritage.org.uk](http://www.kirriemuirheritage.org.uk)

gain a voice in decisions that affect them.<sup>7</sup> Volunteer Centre Angus encourages people who want to get involved in volunteering and helps them find the best volunteering opportunity to suit them. They also work with volunteering involving organisations to help them create the best experience for volunteers.<sup>8</sup>

54% of the people surveyed through the Angus Citizen's Survey stated that they thought there had been no change in their neighbourhood over the past 5 years and 24% thought it had got worse. Increase in drug problems was the main cause cited. Of those who thought the area had got better, (14%) friendly people and neighbours was stated.<sup>9</sup> Low levels of participation in community activities were noted however knowledge of local community planning structures eg consultation events, community councils, residents associations, local area partnerships etc was considerably higher, however 63% of those surveyed thought they had no influence over decisions which effected their neighbourhood.<sup>10</sup>

## Economic Well-being

Nearly 62.5% of the population are in employment which is higher than the Angus average. Just under 40% of people work full-time and 12% work part-time. Nearly 12% are classed as self-employed which is the highest figure in Angus. Of those who are not employed 15% are retired and just less than 4% are students. Just under 6% are looking after family and 5% are permanently sick or disabled. 687 people (7%) claim job seekers allowance.<sup>11</sup> 50% of the people surveyed through the Angus Citizen's Survey stated that they considered lack of job opportunities in Angus to be the main barrier to finding employment.<sup>12</sup>

13% of the population in Kirriemuir and Dean are categorised as being 'income deprived'. A calculation that includes the numbers of people, both adult and children, who are receiving or are dependent on benefits related to income or tax credits. In this area this equates to 1275 people.<sup>13</sup>

The largest sector people work in is in manufacturing, the next two largest sectors are wholesale and retail sector, businesses that sell goods to retailers, wholesalers, or to the general public and health and social work.<sup>14</sup> 59% of people travel to their place of work or study by car and the average distance to travel is 17 miles which is the second highest figure in Angus<sup>15</sup> Nearly 47% of households in Kirriemuir and Dean own a car<sup>16</sup> however in households with a car 77% of people still use public transport to travel to work.<sup>17</sup>

---

<sup>7</sup> [www.aavo.org.uk](http://www.aavo.org.uk)

<sup>8</sup> [www.volunteerangus.org.uk](http://www.volunteerangus.org.uk)

<sup>9</sup> Angus Citizens Survey 2009

<sup>10</sup> *ibid*

<sup>11</sup> Table KS09a Economic Activity, <http://www.angus.gov.uk/atoz/mmwards/ks09a.pdf>

<sup>12</sup> Angus Citizens Survey 2009

<sup>13</sup> [www.sns.gov.uk](http://www.sns.gov.uk)

<sup>14</sup> Table KS11a Industry of Employment, <http://www.angus.gov.uk/atoz/mmwards/ks11a.pdf>

<sup>15</sup> Table KS15 Travel to work and place of study, <http://www.angus.gov.uk/atoz/mmwards/ks15.pdf>

<sup>16</sup> Table KS17 Cars or Vans, <http://www.angus.gov.uk/atoz/mmwards/ks17.pdf>

<sup>17</sup> Table KS15 Travel to work and place of study, <http://www.angus.gov.uk/atoz/mmwards/ks15.pdf>

Land previously identified to contribute towards meeting local employment needs has not come forward. In order to provide a marketable supply of employment land in the area the Local Plan allocates land at Forfar Road to accommodate local business development well located for access to the A90 (T).<sup>18</sup>

## Housing

Just under 29% of households in Kirriemuir and Dean are made up of families with dependent children a figure which is higher than the Angus average. 25% of households in the area are made up of pensioners. Just under 6% of households in Kirriemuir and Dean are made up of lone parents.<sup>19</sup> There are 3,800 dwellings in the bands A-C with only just over 1700 dwellings in bands D-H. The majority of dwellings in this area are in bands A and B.<sup>20</sup>

61% of the people surveyed through the Angus Citizen's have lived in the area for over ten years, with 20% having always lived there, the highest figure in Angus and 59% of people own their homes.<sup>21</sup>

As part of a recent analysis of the local housing system in Angus, the Local Housing Need Assessment (LHNA) assessed the current need for affordable housing in Angus as well as in each of the 4 housing market areas (HMAs) including Forfar, Kirriemuir and the Angus Glens. The need for additional low cost home ownership (LCHO) forms of affordable housing for Forfar, Kirriemuir and the Angus Glens over the period 2003 – 2008 is estimated at 83. A commitment to allocating 15% of the 714 housing allocations in the local plan review will provide 106 affordable housing units.<sup>22</sup>

There are a number of sites in Kirriemuir that provide opportunities for development. Land between Kinnordy Road and Shielhill Road is allocated for around 120 dwellings with a requirement for 15% of the capacity of the site to provide LCHO affordable housing. Land south of Westfield/Lindsay Street is also allocated for around 40 dwellings.<sup>23</sup>

Being inland Kirriemuir and Dean has no risk from coastal flooding and a low percentage of dwelling houses at risk from fluvial flooding at 0.9%.<sup>24</sup> Any areas at risk are around Kinnordy Loch the Dean Water and where the South Esk runs through Kirriemuir and Dean.<sup>25</sup>

## Environment

Kirriemuir and Dean has a rich and varied biodiversity that is reflected in the broad range of sites designated for their natural heritage value. Protecting and enhancing the environmental assets and built and historic heritage is central to the sustainable development of Kirriemuir and Dean.

---

<sup>18</sup> <http://www.angus.gov.uk/localplan/localplansection4kirriemuir.pdf>

<sup>19</sup> Table KS20 Household Composition, <http://www.angus.gov.uk/atoz/mmwards/ks20.pdf>

<sup>20</sup> [www.sns.gov.uk](http://www.sns.gov.uk)

<sup>21</sup> Angus Citizens Survey

<sup>22</sup> <http://www.angus.gov.uk/localplan/ALPReviewAdoptedsmall.pdf>

<sup>23</sup> <http://www.angus.gov.uk/localplan/ALPReviewAdoptedsection4kirriemuir.pdf>

<sup>24</sup> [www.sns.gov.uk](http://www.sns.gov.uk)

<sup>25</sup> [www.sepa.org.uk](http://www.sepa.org.uk)

There are six sites of special scientific interest in the Kirriemuir and Dean area. Lesser known areas are Balloch Moss, raised mire which demonstrates an unusual hummock and hollow structure on the peat dome surface. Crossbog Pinewood which as its name suggests contains native pinewood which is the only one of its kind in Angus and Forestmuir, one of the few intact areas of unimproved lowland grassland, heath and mire left in Angus which supports a rich flora, including several uncommon plants such as coral-root orchid. Den of Arlie is mixed deciduous gorge woodland which supports an exceptionally high numbers of woodland vascular plants, mosses and liverworts, many of which are rare.<sup>26</sup>

Other more popular places are Loch of Kinnordy, a nature reserve managed by the Royal Society for the Protection of Birds (RSPB) and extends to 88 ha and is surrounded by farmland a half-mile to the west of Kirriemuir. Interpretive displays explain the flora and fauna, which includes wildfowl and wading birds, together with fishing ospreys, whooper swans and nationally-important breeding colonies of black-necked grebes and black-headed gulls. Visitors can observe the birds from hides located around the loch. Set among the foothills of the Braes of Angus and close to the fertile farmlands of Strathmore, the Loch of Lintrathen attracts vast numbers of wintering wildfowl. From late autumn onwards many birds come to the reserve, including whooper swans.<sup>27</sup>

Kirriemuir and Dean is host to three of the five Angus Glens. Glenisla sits in the north-west corner of the Angus Glens. Glenisla encompasses the smaller glens: Cally, Brighty, Beanie, Finlet, Markie and Damph. Heather mountains to the north lead down to gentler hills, eventually giving way to rolling pasture and arable land. Glenisla boasts an enormous diversity of land based industry ranging from game shooting, through stock farming, to cereal and vegetable production.<sup>28</sup>

Glen Clova abounds with wildlife, glaciated landscapes and magnificent views. From forestry to pockets of native woodlands and heather covered hills and winding rivers, Glen Clova has an excellent variety of habitats. These support a tremendous range of wildlife from roe deer, red squirrels and salmon. A lot of the mountain species can be found in Clova. Red deer, mountain hare, red grouse, black game, ptarmigan, ravens, peregrines and eagles all are seen regularly by the keen wildlife watchers.

Whilst not counted as one of the five Angus Glens, Glen Doll lies at the top of Glen Clova and is an area of spectacular scenery, with steep hills, Corries and Munro's. The Glen lies within the Cairngorms National Park and also incorporates the Corrie Fee Nature Reserve which is home to many endangered plants. Since April 1998 Angus Council has provided a Ranger Service for the Angus Glens based in Glen Doll. The Service comprises two full time countryside rangers.<sup>29</sup>

---

<sup>26</sup> <http://www.angus.gov.uk/corepathsplan/Strategicenvironmentalassessment/Appendix4.pdf>

<sup>27</sup> [www.angusahead.com](http://www.angusahead.com)

<sup>28</sup> [www.angusglens.co.uk](http://www.angusglens.co.uk)

<sup>29</sup> [www.angusglens.co.uk](http://www.angusglens.co.uk)

Glenprosen, often abbreviated to 'Prosen', nestles between Isla and Clova, and above that again, the watershed of Glen Isla links to Glen Esk. There is no road through to the north, only hill tracks.<sup>30</sup>

94% of the people surveyed through the Angus Citizen's Survey stated that they were either very satisfied or fairly satisfied with their natural environment and 96% of the people surveyed stated that they were either very satisfied or fairly satisfied with parks and open spaces.<sup>31</sup>

Both Nitrogen dioxide concentrations and particulate pollution can harm the human respiratory and cardiovascular systems, and are linked to asthma and mortality. Coal burning, diesel combustion, construction, mining and quarrying are the major sources of particulate emissions.<sup>32</sup> The air quality in Kirriemuir and Dean is better than the Angus average as both nitrogen oxide concentrations and particulate pollution concentrations are lower than the Angus average with nitrogen dioxide concentrations being significantly lower, 4.9% as opposed to 7.7%.<sup>33</sup>

## Transport and Access

The Strathmore area, incorporating the town of Kirriemuir is less densely populated than other areas in Angus and here most of the bus services are provided on a subsidised basis except for the commercial operation on the main inter-urban corridors. Beyond the Strathmore area lies the sparsely populated Angus Glens, where all services are provided on a subsidised basis. There are 13 operators providing registered local bus services in the area, with Stagecoach Strathtay, providing approximately 90% of the local bus service network. Much has been achieved in partnership with operators to provide enhanced service provision in terms of improved frequency, network coverage and vehicle standards. The diverse journey demands of rural Angus remain a challenge and new and innovative means of meeting passenger demand are actively pursued.<sup>34</sup> A royal mail post bus scheme operates in Angus with journeys available from Kirriemuir to Glen Clova and Glen Prosen.

86% of the people surveyed through the Angus Citizen's Survey in Central and West Angus (Forfar and District and Kirriemuir and Dean) stated that they were either very or fairly satisfied with public transport.<sup>35</sup>

ACCESS Angus is the way for Angus citizens to access council services. This is available at ACCESS Offices, ACCESSLine and ACCESS Online. An ACCESS Office provides a council office where the public can speak to a member of staff. Staff can deal with all general enquiries, requests for services, complaints and payments for some council services. There is an ACCESS office in Kirriemuir. ACCESSLine is a direct telephone line for council services and can deal with all general enquiries, requests for services, complaints and payments for some council services. ACCESS Online is the A-Z of Services function of the Angus Council

---

<sup>30</sup> *ibid*

<sup>31</sup> Angus Citizens Survey 2009

<sup>32</sup> <http://www.scotland.gov.uk/Topics/Statistics/Browse/Environment/TrendPM10>

<sup>33</sup> [www.sns.gov.uk](http://www.sns.gov.uk)

<sup>34</sup> <http://www.tactran.gov.uk/documents/TACTRANRTS-FinalNov2008.pdf>

<sup>35</sup> Angus Citizens Survey 2009

website which contains lots of service information, and allows users to request services online.<sup>36</sup>

Of the people surveyed through the Angus Citizen's Survey in Central and West Angus (Forfar and District and Kirriemuir and Dean) 52% stated that when they last contacted the Council it was by telephone and 42% by a personal visit to a council office.<sup>37</sup>

## Community Safety

In 2007 a report was commissioned by Angus Community Safety Partnership to ascertain how residents within Angus rated their local area, how safe they felt within their area and whether specific anti-social behaviour and environmental issues were of concern to them. A follow up assessment was completed in 2009 to help confirm findings.

The areas surveyed in Kirriemuir and Dean were split into 2 areas of the north and south town and then rural areas including Airlie, Eassie, Glamis, Newtyle, Padanaram, Tannadice and Westmuir.

In Kirriemuir on average 45% of people reported that the area they lived in was "very good". This varied across areas from 66% to 47%. This rises to nearly 82% in the rural areas surrounding Kirriemuir. An average of nearly 75% of people in the town areas and over 83% of residents in the more rural areas stated that they felt very safe in the area when they were out alone during the day. Again this varied across areas from 81% to 66%. These figures fall to averages of 28% in the town and 45% in rural areas at night. 7% of people in some areas of the town thought that it was too unsafe to walk alone at night.<sup>38</sup>

Issues that concerned people in Kirriemuir included dog fouling at 25% and people drinking or using drugs at 18%. 11% stated that they were very worried about vandalism and damage to property and 8% of people stated they were very worried about young people hanging around. In rural areas the biggest causes for concern were dog fouling and rubbish lying around.<sup>39</sup>

In Kirriemuir an average of 74% of people in the town areas and 81% of residents in the more rural areas stated that they felt very safe in the area when they were out during the day with friends and corresponding figures of 58% and 73% when they were alone. In town people felt considerably less safe in the south of the town. At night levels of 33% were reported of people feeling very safe with friends in the town and 54% in rural areas. However on average only 19% of people stated they felt very safe alone after dark in the town and 40% in rural areas. 13% of people said they wouldn't walk alone in the town areas.

Issues that concerned people in Kirriemuir & District most were dog fouling and people drinking and using drugs. 17% of residents were very worried about dog fouling in the north of the town with 40% of people concerned in the south area of the town. Similarly 16% of

---

<sup>36</sup> [www.angus.gov.uk](http://www.angus.gov.uk)

<sup>37</sup> Angus Citizens Survey 2009

<sup>38</sup> Angus Community Safety Partnership, Community Safety Survey 2009 - Kirriemuir

<sup>39</sup> *ibid*

people were very worried about people drinking or using drugs and 40% of people in the south of the town. Other major concerns were vandalism and damage. Rural areas were most concerned with dog fouling and rubbish lying around at 40% and 13% respectively.

22% of people surveyed through the Angus Citizen's Survey stated that they had felt fearful about becoming a victim of crime in the past year, 16% had actually been a victim of crime. 87% of the people surveyed stated that they were either very satisfied or fairly satisfied with the police service. 81% of people were very satisfied and 19% were fairly satisfied (100%) with the fire service<sup>40</sup>

## Health & Social Well-being

The GP Practice in Kirriemuir is on Tannage Brae. The nearest minor injury unit is at the Whitehills Health and Community Care Centre 6 miles away. It provides a range of Health, Social Work and Voluntary new and existing services, brought together within one purpose built centre. There are 60 in-patient beds, including a four bedded hospice, a day centre for physically disabled adults, Minor Injury Unit and X-Ray, General and specialist outpatient services and a conference suite. Special nurses, who have undergone training in both minor injuries and minor illnesses, staff Minor Injury Units. Some of the units have x-ray facilities during the day and there is a specialist Orthopaedic Support Nurse whom can treat patients in the first instance before referring on to the fracture clinics to be seen by a member of the orthopaedic team. The Out of Hours Service also operates out of the Minor Injury Units.<sup>41</sup> Stracathro Hospital is 20 miles away and is a general hospital managed by NHS Tayside as is Ninewells Hospital 19 miles away with accident and emergency provision.

7% of the population of Kirriemuir and Dean are estimated to be prescribed drugs for anxiety, depression or psychosis, slightly lower than Angus, hospital admissions for both drugs and alcohol misuse are also below the Angus average.<sup>42</sup> Tayside Substance Misuse Services (TSMS) is an area-wide service delivering treatment for addictions. This over arching NHS Service is hosted by Angus Community Health Partnership (ACHP). The services operate multi-disciplinary teams within health settings as well as working in partnership with other statutory and voluntary services within and outwith the field of addictions. The majority of services are community based working out of health centres across Angus, offering individual and group-work specialist interventions. A residential unit for alcohol and drug problems is located currently at Sunnyside Royal Hospital. General Hospital liaison services for alcohol problems are located in Ninewells and respond to Angus admissions. Primary Care Liaison services are delivered within general practice, both services focus on early intervention, through screening and delivery of brief interventions.<sup>43</sup>

There is a slightly higher percentage of children breast feeding at the 6-8 week review than the Angus average at just over 37% however only 94% of children are vaccinated against MMR1 by 5 years of age, which is lower than Angus figures of 95%.<sup>44</sup> Health Visitors/Public

---

<sup>40</sup> Angus Citizens Survey 2009

<sup>41</sup> [http://www.nhstayside.scot.nhs.uk/chp/anguschp/services\\_minorinjury.shtml](http://www.nhstayside.scot.nhs.uk/chp/anguschp/services_minorinjury.shtml)

<sup>42</sup> [www.sns.gov.uk](http://www.sns.gov.uk)

<sup>43</sup> [http://www.nhstayside.scot.nhs.uk/chp/anguschp/services\\_minorinjury.shtml](http://www.nhstayside.scot.nhs.uk/chp/anguschp/services_minorinjury.shtml)

<sup>44</sup> [www.sns.gov.uk](http://www.sns.gov.uk)

health Nurses are registered nurses with additional specialist qualifications in community health/public health nursing. They work together with other healthcare agencies, local authority professionals and voluntary agencies. At present they are aligned to GP Practices and carry caseloads specific to each GP Practice, however they work cooperatively with individuals, families, groups and whole communities and are skilled in assessing and offering information on a wide range of issues, such as Antenatal Care, Postnatal Care and Child Development.<sup>45</sup>

96% of the people surveyed through the Angus Citizen's Survey stated that they were either very or fairly satisfied with their local health services. 99% of people surveyed were registered with a GP.<sup>46</sup>

44% of people surveyed through the Angus Citizen's Survey stated that their overall health was good with 55% of people stating that they undertook moderate physical activity for a period of 30 minutes a day 5 days a week or more. However only 21% of people stated that they had eaten five portions of fruit or vegetables the previous day and 41% currently smoke. 85% of people had been feeling optimistic about the future and 91% felt useful.<sup>47</sup>

## Education and Life Long Learning

There are two primary schools serving Kirriemuir town residents, and eight further primary schools in the rural areas of the ward. 2010 however will see the opening of a new primary school, Isla Primary at Peel Farm which will replace the existing Kilry, Lintrathen and Glenisla Primary schools. Websters High School is the local Secondary School. Further Education is located in Arbroath through Angus College which meets the education and training needs of the widespread population. Angus College provides transport from most rural Angus areas however also understands that it is not always possible or convenient for everyone to study at the main campus in Arbroath. In recognition of this, the College has established a flagship Learning Centre in Kirriemuir where there are a wide range of training options from full-time to part-time or even flexible 'drop-in' classes. Other further education colleges are available in Dundee.

In 2007 primary school attendance rate was over 96% with secondary school attendance just under 94%.<sup>48</sup> Just under 90% of pupils leaving S4 had 5 awards at SCQF level 3 and above. 65% of S5 pupils achieved one award at level 6 or above and 44% of pupils achieved 3 awards at level 6 or above.<sup>49</sup>

In 2009 over 49% of school leavers from Websters High School went into higher education, with nearly 26% moving onto further education, 4.7% were registered as unemployed seeking work.<sup>50</sup>

---

<sup>45</sup> [http://www.nhstayside.scot.nhs.uk/chp/anguschp/services\\_minorinjury.shtml](http://www.nhstayside.scot.nhs.uk/chp/anguschp/services_minorinjury.shtml)

<sup>46</sup> Angus Citizens Survey 2009

<sup>47</sup> Angus Citizens Survey 2009

<sup>48</sup> [www.sns.gov.uk](http://www.sns.gov.uk)

<sup>49</sup> *ibid*

<sup>50</sup> <http://www.skillsdevelopmentscotland.co.uk/>

There is an Integrated Community School Partnership for this area. It provides a forum for local agencies to work together to ensure that local services reflect the needs, interests, concerns and aspirations of children, young people and families. Representatives are drawn from a number of key council services including education and social work, along with partners from NHS Tayside, Tayside Police and the voluntary sector. Through the creation of shared local action plans, partnerships work together for the benefit of children, young people and families in their area.

78% of the people surveyed through the Angus Citizen's Survey in Central and West Angus (Forfar and District and Kirriemuir and Dean) stated that they were very satisfied with local schools.<sup>51</sup>

The Community Learning and Development office wing is situated at Fairlie House and works with the Community to provide opportunities for adults and young people to learn in a range of informal settings and helps community organisations to be well organised and to achieve their goals. This includes advice and assistance in setting up new groups, training for people on management committees and advice and support in identifying sources of grant aid and making applications.<sup>52</sup>

The highest qualification held by the majority of people surveyed through the Angus Citizen's Survey in Central and West Angus was an O Grade, Standard Grade, GCSE, CSE, Senior Certificate or equivalent. Only 3% had a first degree.<sup>53</sup>

## **Culture and Leisure**

The library in Bank Street provides lending, reference, local history, Internet and information. There is a regular programme of events, exhibitions and activities for all age ranges. There are a wide range of local history publications and some educational material for sale. The library can provide accommodation on a hire basis for clubs and societies.<sup>54</sup>

Webster's Sports Centre is a dual use site attached to Webster's High School, Kirriemuir. The facility is open to the public in the evenings and at weekends. There is a 20 metre deck level swimming pool which is open for public swimming and is also used for swimming lessons, aquafit, kayaking and fun inflatable sessions. There is a full sized multi-sports Games Hall which can accommodate an array of activities from 5-a-side and Badminton, to Short Tennis, Volleyball, and Indoor Cricket. Further to these areas there is also a fully sprung wooden floor Gymnasium where we run a wide selection of fitness and coached classes. Finally there is a fitness suite with a focused selection of CV and weights equipment. Recently the centre has been improved hosting three new accessibility changing rooms and a modern reception area allowing improved access to all areas of the facility.<sup>55</sup>

---

<sup>51</sup> Angus Citizens Survey 2009

<sup>52</sup> [www.angus.gov.uk](http://www.angus.gov.uk)

<sup>53</sup> Angus Citizens Survey 2009

<sup>54</sup> [www.angus.gov.uk](http://www.angus.gov.uk)

<sup>55</sup> *ibid*

Kirriemuir museum is sited in the old Town House on the main square. The oldest building in Kirriemuir, it has seen service as a tolbooth, court, jail, post office, police station and chemist. Today there are two floors of information and exhibits on the town and the Angus Glens, including scale models of the town in 1604, the year the tolbooth was erected, and one of Glen Clova, showing the relief of the hills.<sup>56</sup>

63% of the people surveyed through the Angus Citizen's Survey stated that they were very satisfied with their community centre and library and 48% of the people surveyed stated that they were very satisfied with sports and leisure facilities.<sup>57</sup>

The birthplace and early home of famed Scottish author, playwright and creator of Peter Pan, Sir James Matthew Barrie is set in the heart of Kirriemuir. Owned by the national Trust for Scotland, this 19<sup>th</sup> century cottage and the cottage next door is home to the 'Peter Pan Experience' and important memorabilia, while the Peter Pan garden with a willow crocodile and 'Pirates' Workshop' comprise the surrounding grounds.<sup>58</sup>

The Camera Obscura lies on Kirriemuir Hill, overlooking Kirriemuir and the valley of Strathmore. Both the camera, and the cricket pavilion in which it sits, were donated in 1930 by the author J.M Barrie to his home town. A camera obscura focuses the image of an external view onto a flat surface within a darkened room. The image is sufficiently large so it can be drawn or observed by a group of people. This device uses a 17.8 cm (7 inch) lens, with a focal length of 2.67m (105 inches), to project onto a 1.37m (54 inch) concave table within an octagonal room. In 1999, the facility was reopened after refurbishment, which followed years of neglect. Today, it is maintained by the National Trust for Scotland and is one of only three camera obscuras in Scotland, the others being in Edinburgh and Dumfries.<sup>59</sup>

Cortachy Castle, in the heart of Airlie Estate, has been the home of the Ogilvy family and the seat of the Earls of Airlie ever since the time the family moved here in 1639 when the Airlie Castle was burned down. The castle is not open to the public but one can walk through a network of walks and gardens at certain times of the year. The designed landscape surrounding the Castle extends to some 500 acres and was originally created in 1820. Many fine trees planted in the 1870s have added to the beauty of the landscape today.<sup>60</sup>

The Airlie monument is a familiar landmark in the lower reaches of Glen Clova and Glen Prosen, sited on Tulloch Hill between the two and is a memorial to the ninth Earl of Airlie who died in the Boer war.<sup>61</sup>

Glamis Castle is situated beside the village of Glamis. It is the home of the Earl and Countess of Strathmore and Kinghorne, and is open to the public. Glamis Castle was the childhood home of Elizabeth Bowes-Lyon, best known as the Queen Mother. Her second daughter, Princess Margaret, was born there.

Located in the conservation village of Glamis the Angus Folk Museum is housed in a terraced row of six traditional cottages and a farm steading, and displays the collection of Jean, Lady

---

<sup>56</sup> [www.angusahead.com](http://www.angusahead.com)

<sup>57</sup> Angus Citizens Survey 2009

<sup>58</sup> [www.nts.org.uk/](http://www.nts.org.uk/)

<sup>59</sup> [www.angusahead.com](http://www.angusahead.com)

<sup>60</sup> [www.scotland.com](http://www.scotland.com)

<sup>61</sup> [www.walkhighlands.co.uk](http://www.walkhighlands.co.uk)

Maitland, which was gifted to the nation in the 1950s and is administered by the National Trust for Scotland. This cornucopia of domestic and agricultural artefacts and memorabilia illustrates the daily life of the ordinary people of rural communities in Angus in the 18th Century and 19th centuries.<sup>62</sup>

There is a golf course in the Kirriemuir and Dean ward in Kirriemuir itself. All of Angus' golf courses are marketed by the Carnoustie Country initiative.<sup>63</sup>

---

<sup>62</sup> [www.angusahead.com](http://www.angusahead.com)  
<sup>63</sup> [www.carnoustiecountry.com](http://www.carnoustiecountry.com)